

**STREAMLINE®**

**SAFELY CLEANING AT HEIGHT**



**OVA8®**

The Next Generation  
of Waterfed Poles  
is Here

---

**ELIMINATING POLE SPIN  
ONCE AND FOR ALL**





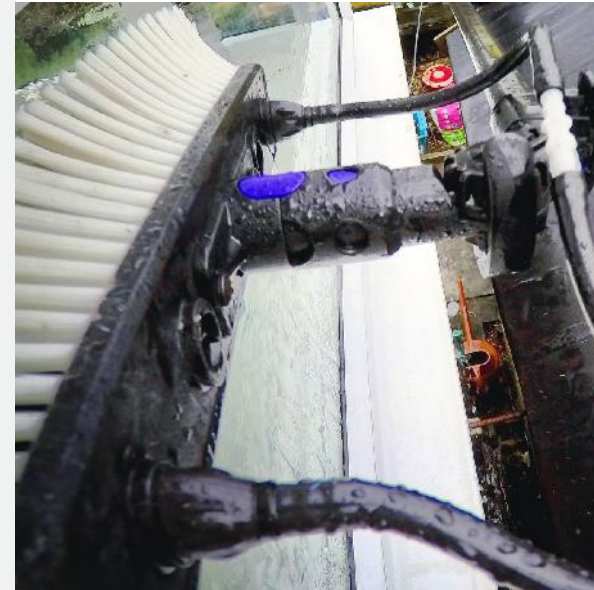
## WHO WE ARE...

**STREAMLINE®** is owned and run by **VARITECH SYSTEMS®**, a family business that has been trading from the South West of England for over 15 years.

With a range of versatile poles, we pride ourselves in providing the perfect window cleaning solutions to meet the needs of our customers worldwide.

Simple, honest, 'on time' service is our commitment to you. We have a technical support team, that ensures our service continues beyond the solution we manufacture and install.

**STREAMLINE®**  
SAFELY CLEANING AT HEIGHT



**ELIMINATING POLE SPIN ONCE AND FOR ALL**





**STREAMLINE®**

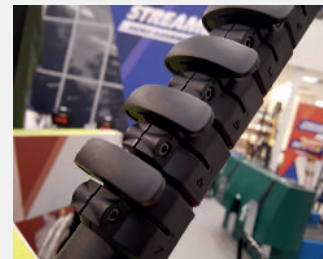
**OVA8®**

Eliminating the spin,  
once and for all

The **STREAMLINE® OVA8®** carbon fibre telescopic poles are designed with 'oval' profile sections, allowing for zero pole spin and reducing the wear of the sections from the pole clamps. Available in a number of different sizes, with numerous adapters and pole extensions, making the **STREAMLINE® OVA8®** one of the best waterfed poles on the market to date!



## SUPERB CLAMPS



## ZERO SPIN



## QUICK RELEASE



### Pole stress

When designing an anti-rotational oval shaped pole, it was discovered that an additional feature was provided – stiffness. The two flat sides of the **STREAMLINE® OVA8®** telescopic pole add more stability and therefore more control for the operator, a huge "safety" plus. Any experienced operative will tell you how dangerous and annoying a spinning pole section is. These flat sides will cancel out that "whipping effect" either from moving a pole at height from one window to another, or 'bouncing off the glass' motions. Operators will be more productive and work safer – both for themselves and others around them.

### Hand ergonomics

Holding any item in the hand for long periods can be painful. The **STREAMLINE® OVA8®** design combines two flat sides. These sit more comfortably in an operator's hand and allow the tips of their fingers to sit on the flat edge. It's been found that handling an **STREAMLINE® OVA8®** pole requires less grip to control the pole, either from pushing it up and down, or from firmly holding the base section to move the pole to the next window.

### Anti-rotational pole sections - Our no.1 goal - NO SPIN!

Arriving at the final oval shape wasn't easy, as many other shapes had failed (round, square, hexagon, octagon, lobe) in one area of design or another, so designing the right shape had to provide more than one feature of anti-spin.

Eliminating the rotational spin of the pole section around the clamp area results in less wear of the pole material. Also, because of the anti-spin pole section, our **STREAMLINE® OVA8®** oval clamps work less due to only having to prevent the pole sections from moving up or down.

### Why use the **STREAMLINE® OVA8®** pole?

- Its innovative design ensures that the dreaded pole spin associated with worn waterfed pole sections is a thing of the past.
- Superb pole section clamps ensure the pole sections stay where you want them.
- 100% carbon ensuring it's as light as possible and as strong as possible.
- Its 2 flat sides make the pole easier to hold for long periods of time.
- Available in multiple sizes to suit customers' needs.
- AVAILABLE NOW - a range of accessories to ensure that the **STREAMLINE® OVA8®** is as versatile as possible.

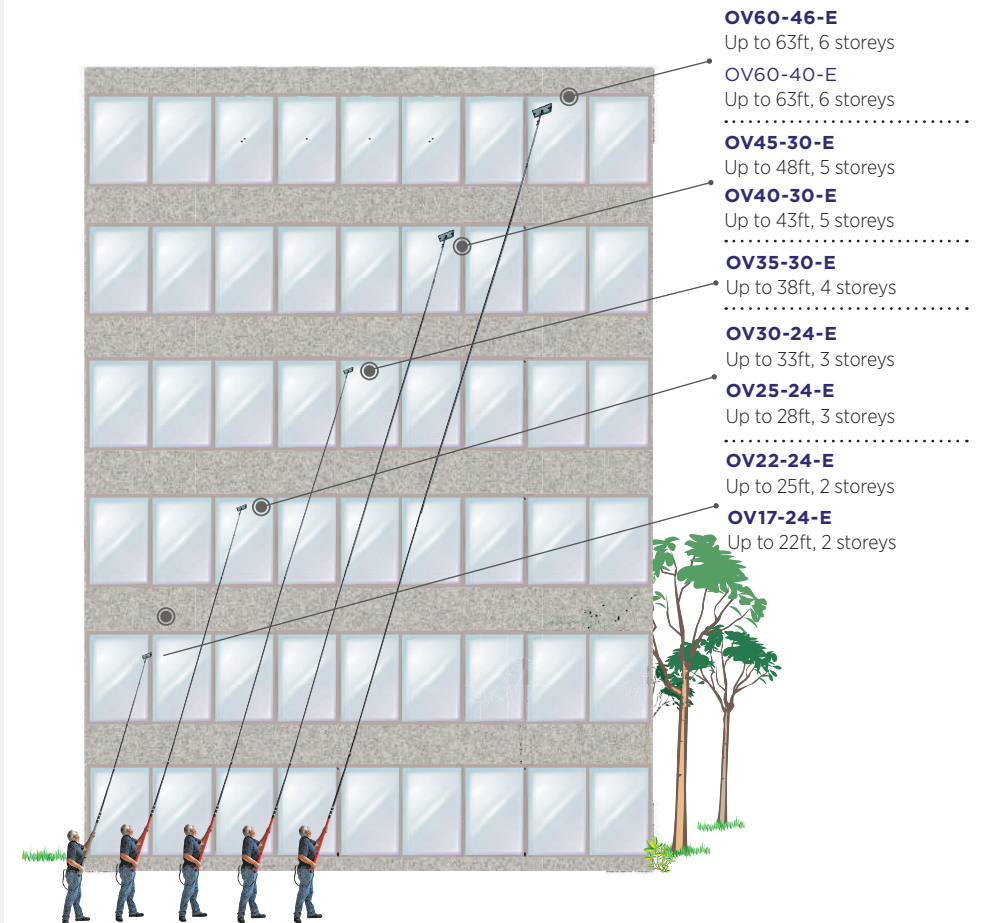
**100%  
Carbon Fibre  
Poles**



## STREAMLINE® OVA8® Poles, available in 9 sizes

PART NO	NO. OF SECTIONS	MIN. LENGTH (mm/ft)	MAX. LENGTH (mm/ft)	ACHIEVABLE HEIGHT	LENGTH OF TUBING	WEIGHT
<b>OV17-24-E</b>	5	1,500mm/5ft	5,100mm/17ft	20ft/6.1m	8 metre	0.99kg
<b>OV22-24-E</b>	6	1,500mm/5ft	6,700mm/22ft	25ft/7.6m	9 metre	1.35kg
<b>OV22-40-E</b> HI MOD	6	1,500mm/5ft	6,700mm/22ft	25ft/7.6m	9 metre	1.35kg
<b>OV25-24-E</b>	5	1,830mm/6ft	7,700mm/25ft	28ft/8.5m	10 metre	1.35kg
<b>OV30-24-E</b>	6	1,865mm/6ft	9,150mm/30ft	33ft/10.6m	12 metre	1.70kg
<b>OV35-30-E</b>	7	1,900mm/6ft	10,700mm/35ft	38ft/11.6m	12 metre	2.00kg
<b>OV40-30-E</b>	8	2,110mm/7ft	12,400mm/40ft	43ft/13.1m	15 metre	2.50kg
<b>OV45-30-E</b>	9	2,150mm/7ft	13,720mm/45ft	48ft/14.6m	15 metre	2.80kg
<b>OV60-40-E</b>	10	2,270mm/7ft	18,288mm/60ft	63ft/19.2m	20 metre	3.80kg
<b>OV60-40-E</b> HI MOD	10	2,270mm/7ft	18,288mm/60ft	63ft/19.2m	20 metre	3.80kg

**CAUTION! DANGER OF ELECTROCUTION** These poles are made from carbon fibre which is a conductor of electricity. The last section of the pole is glass fibre to reduce the risk of electrocution. Care needs to be taken to avoid working near to overhead power lines or other electrical installations.



### NEW 22ft HI MOD STREAMLINE® OVA8® POLE

We listened to our customers, who wanted a 22ft version of the STREAMLINE® OVA8® pole, so here it is. Packed with all the features of its larger counterparts, it's an ideal pole for the professional window cleaner. Weighting only 1150g it comes with 6 sections, 145cm compressed length and reaches up to an impressive 25ft with outstanding rigidity.

### DID YOU KNOW?

All STREAMLINE® OVA8® poles come complete with our adjustable nylon gooseneck, tubing, a STREAMLINE® brush and a hose coupling of your choice!

**100%  
Carbon Fibre  
Poles**

### Take a look at our growing selection of STREAMLINE® OVA8® videos...

Scan the QR code to visit our STREAMLINE® OVA8® YouTube playlist!



For STREAMLINE® OVA8® accessories see page 96

For STREAMLINE® OVA8® accessories see page 10

# STREAMLINE® OVA8® EXTENSIONS

Make your **STREAMLINE® OVA8®** waterfed pole even more versatile

With a range of **NEW STREAMLINE® OVA8®** pole extensions, the **STREAMLINE® OVA8®** waterfed pole becomes even more versatile. Available in a number of bespoke pole sections, you can extend the reach of this great waterfed pole with ease.

## Extension sections for OV17-24-E

PART NO	DESCRIPTION	ACHIEVABLE HEIGHT WITH EXTENSION
<b>OV06-07-1675</b>	STREAMLINE® OVA8 Carbon Sections 6-7 to increase 17 foot to 30 foot	30ft
<b>OV06-08-1675</b>	STREAMLINE® OVA8 Carbon Sections 6-8 to increase 17 foot to 35 foot	35ft
<b>OV06-09-1675</b>	STREAMLINE® OVA8 Carbon Sections 6-9 to increase 17 foot to 40 foot	40ft
<b>OV06-10-1675</b>	STREAMLINE® OVA8 Carbon Sections 6-10 to increase 17 foot to 45 foot	45ft

## Extension sections for OV22-24-E

PART NO	DESCRIPTION	ACHIEVABLE HEIGHT WITH EXTENSION
<b>OV06-07-1675</b>	STREAMLINE® OVA8 Carbon Sections 6-7 to increase 22 foot to 30 foot	30ft
<b>OV06-08-1675</b>	STREAMLINE® OVA8 Carbon Sections 6-8 to increase 22 foot to 35 foot	35ft
<b>OV06-09-1675</b>	STREAMLINE® OVA8 Carbon Sections 6-9 to increase 22 foot to 40 foot	40ft
<b>OV06-10-1675</b>	STREAMLINE® OVA8 Carbon Sections 6-10 to increase 22 foot to 45 foot	45ft



## Extension sections for OV25-24-E

PART NO	DESCRIPTION	ACHIEVABLE HEIGHT WITH EXTENSION
<b>OV06-07-1675</b>	STREAMLINE® OVA8 Carbon Sections 6-7 to increase 25 foot to 35 foot	35ft
<b>OV06-08-1675</b>	STREAMLINE® OVA8 Carbon Sections 6-8 to increase 25 foot to 40 foot	40ft
<b>OV06-09-1675</b>	STREAMLINE® OVA8 Carbon Sections 6-9 to increase 25 foot to 45 foot	45ft
<b>OV06-10-1675</b>	STREAMLINE® OVA8 Carbon Sections 6-10 to increase 25 foot to 50 foot	50ft

## Extension sections for OV30-24-E

PART NO	DESCRIPTION	ACHIEVABLE HEIGHT WITH EXTENSION
<b>OV07-08-1675</b>	STREAMLINE® OVA8 Carbon Sections 7-8 to increase 30 foot to 40 foot	40ft
<b>OV07-09-1675</b>	STREAMLINE® OVA8 Carbon Sections 7-9 to increase 30 foot to 45 foot	45ft
<b>OV07-10-1675</b>	STREAMLINE® OVA8 Carbon Sections 7-10 to increase 30 foot to 50 foot	50ft

## Extension sections for OV35-30-E

PART NO	DESCRIPTION	ACHIEVABLE HEIGHT WITH EXTENSION
<b>OV08-09-1675</b>	STREAMLINE® OVA8 Carbon Sections 8-9 to increase 35 foot to 45 foot	45ft
<b>OV08-10-1675</b>	STREAMLINE® OVA8 Carbon Sections 8-10 to increase 35 foot to 50 foot	50ft

## Extension sections for OV40-30-E

PART NO	DESCRIPTION	ACHIEVABLE HEIGHT WITH EXTENSION
<b>OV09-10-1675</b>	STREAMLINE® OVA8 Carbon Sections 9-10 to increase 40 foot to 50 foot	50ft





# STREAMLINE® OVA8® ACCESSORIES

See our brand new  
STREAMLINE® OVA8®  
accessories...

A growing range of STREAMLINE® OVA8®  
accessories making this water fed pole one of  
the most versatile poles on the market  
to date.

ONE OF THE MOST VERSATILE POLES ON THE MARKET

## STREAMLINE® OVA8® Accessories

### OVA8® 150mm Nylon Brush Extension

PART NO	ITEM
OV-FT150	OVA8® 150mm Nylon Brush Extension



### OVA8® 200mm Carbon Brush Extension

PART NO	ITEM
OV-FT200	OVA8® 200mm Carbon Brush Extension



### OVA8® 300mm Carbon Brush Extension

PART NO	ITEM
OV-FT300	OVA8® 300mm Carbon Brush Extension



### OVA8® Brush Swivel Socket - 90 Degree

PART NO	ITEM
OV-BS0003	OVA8® Brush Swivel Socket - 90 Degree



### OVA8® Brush Socket - 90 Degree

PART NO	ITEM
OV-BS0002	OVA8® Brush Socket 90 Degree



### NEW OVA8® Bronze Wool Pad

PART NO	ITEM
OV-PAD001	Streamline® OVA8 Bronze Wool Pad Adapter complete with 1 x Streamline® Bronze Wool Pad
V549132	Pad Only



### OVA8® Dual Angle Adapter

PART NO	ITEM
OV-AD20-10	OVA8® Dual Angle Adapter



### OVA8® Angle Adapter

PART NO	ITEM
OV-AD20-15	OVA8® 3" Angle Adapter
OV-AD20-16	OVA8® 6" Angle Adapter



### OVA8® Angle Adapter with GT Thread

PART NO	ITEM
OV-AD20-03	OVA8® 3" Angle Adapter
OV-AD20-06	OVA8® 6" Angle Adapter
OV-AD20-09	OVA8® 9" Angle Adapter
OV-AD20-12	OVA8® 12" Angle Adapter



### OVA8® Clamp

PART NO	ITEM
OV-CLMP01	OVA8® Clamp 1
OV-CLMP02	OVA8® Clamp 2
OV-CLMP03	OVA8® Clamp 3
OV-CLMP04	OVA8® Clamp 4
OV-CLMP05	OVA8® Clamp 5
OV-CLMP06	OVA8® Clamp 6
OV-CLMP07	OVA8® Clamp 7
OV-CLMP08	OVA8® Clamp 8
OV-CLMP09	OVA8® Clamp 9
OV-CLMP010	OVA8® Clamp 10



### OVA8® Clamp Lever

PART NO	ITEM
OV-CL0001	OVA8® Clamp Lever



### 10" (260mm) STREAMLINE® Brush - Medium Dual Bristle, with OVA8® Socket

WEIGHT	WIDTH
289g	260mm

PART NO	ITEM
V-SBF26-MD06-001	Brush only
V-SBF26-MD06-010	Pack of 10



### 14" (360mm) STREAMLINE® Brush - Medium Dual Bristle, with OVA8® Socket

WEIGHT	WIDTH
351g	360mm

PART NO	ITEM
V-SBF36-MD06-001	Brush only
V-SBF36-MD06-010	Pack of 10



### 10" (260mm) STREAMLINE® Brush - Dual Bristle with Boars' Hair and OVA8® Socket

WEIGHT	WIDTH
392g	260mm

PART NO	ITEM
V-SBF26-BD06-001	Brush only
V-SBF26-BD06-010	Pack of 10



### 14" (360mm) STREAMLINE® Brush - Dual Bristle with Boars' Hair and OVA8® Socket

WEIGHT	WIDTH
392g	260mm

PART NO	ITEM
V-SBF36-BD06-001	Brush only
V-SBF36-BD06-010	Pack of 10



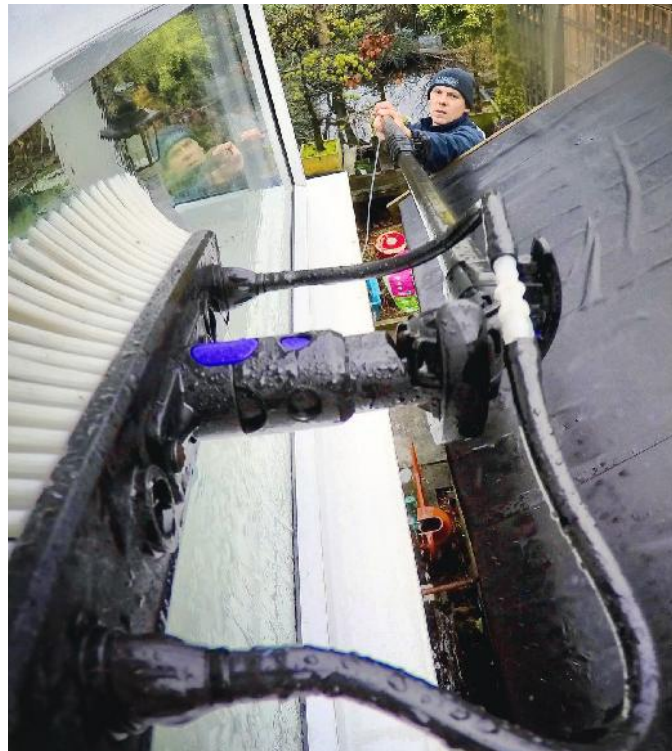
### STREAMLINE® Nozzle Jets

PART NO	ITEM
FJ2-02	Fan Jet Kit
FJ2-04	Fan Jet Kit pack of 4
NJ3-02	Pencil Jet Kit
NJ3-04	Pencil Jet Kit pack of 4



# OVA8®

- The next generation of waterfed poles is here
- Eliminating pole spin, once and for all
- A growing range of accessories, making the **STREAMLINE® OVA8®** one of the most versatile poles on the market







# ***STREAMLINE***®

Call us today on 01626 830830  
for more information.

Varitech Systems  
Hamilton House, 8 Fairfax Road  
Heathfield Industrial  
Estate, Newton Abbot  
Devon, TQ12 6UD  
United Kingdom  
Telephone +44 (0) 1626 830 830  
Email [sales@varitechsystems.co.uk](mailto:sales@varitechsystems.co.uk)  
Visit [www.varitechsystems.co.uk](http://www.varitechsystems.co.uk)

**FOLLOW US ON:**



[www.facebook.com/varitechsystems/](https://www.facebook.com/varitechsystems/)  
[www.instagram.com/varitechsystems/](https://www.instagram.com/varitechsystems/)  
[twitter.com/VaritechSystems](https://twitter.com/VaritechSystems)